



BRISTOL

Bristol's journey towards sustainable lifestyles

Alex Minshull

City Innovation and Sustainability Service Manager

Bristol City Council





BRISTOL

People



Investment



Services

Regulation



20







BRISTOL

- The UK's best city to live!
- The UK's Greenest city!
- The UK's Smartest city!
- High skill levels, strong inward investment and rapidly growing population

But also:

- High housing costs
- Significant income inequality
- Diverse population – 187 countries of birth





BRISTOL

Long journey to make Bristol the UK's greenest city

2003 Community Strategy:

"Bristol; a green capital in Europe – creating sustainable communities and improving the quality of life."

2007 Bristol Green Capital Partnership founded

2008 European Green Capital Award created



BRISTOL
2015 EUROPEAN
GREEN CAPITAL

In it for good™

Our strengths

- Many years of pioneering environmental efforts
- Strong performance across 12 categories
- Strong community action
- Effective partnerships bringing it together
- Ambitious financial investment in the future
- Exciting plans for 2015
- Sense of fun!

BRISTOL
2015 EUROPEAN
GREEN CAPITAL

In it for good™

Our vision

To become a global leader in sustainable urban living

Local
empowerment

Sustainability
leadership

International
reach

BRISTOL
2015 EUROPEAN
GREEN CAPITAL

In it for good™

Simple themes

Five primary areas of focus



NATURE



RESOURCES



ENERGY



FOOD



TRANSPORT

BRISTOL
2015 EUROPEAN
GREEN CAPITAL

In it for good™

Eye catching public events



Call to action: Do15... I'm in, are you?



Kevin McCloud
Broadcaster, Designer & Developer
Bristol 2015 Ambassador

Do15

I'm in, are you?
Small changes for a better Bristol
do15.co.uk #do15

In it for good

BRISTOL 2015 EUROPEAN GREEN CAPITAL

Official Partners: SKANSKA, First, KPMG, Bristol City Council, Bristol Harbour, Bristol Airport, Bristol Harbour, Bristol Harbour, Bristol Harbour

Kevin McCloud
Image by: Oliver & Louisa



Hear Breakfast with
Ed, Troy and Paulina

Do15

We're in, are you?
Small changes for a better Bristol
do15.co.uk #do15

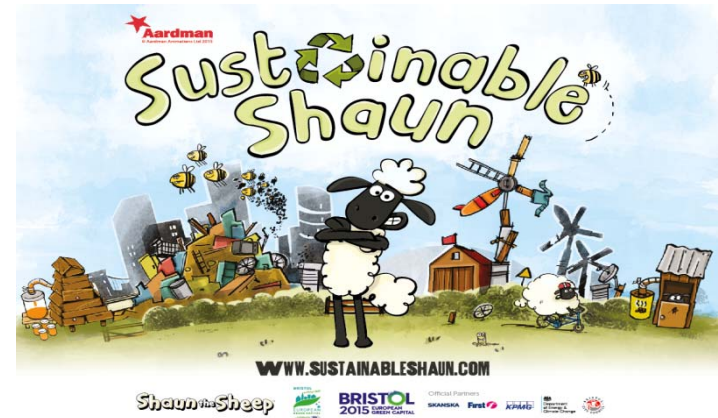
In it for good

BRISTOL 2015 EUROPEAN GREEN CAPITAL

Official Partners: SKANSKA, First, KPMG, Bristol City Council, Bristol Harbour, Bristol Airport, Bristol Harbour, Bristol Harbour, Bristol Harbour



Education programme



BRISTOL
2015 EUROPEAN GREEN CAPITAL



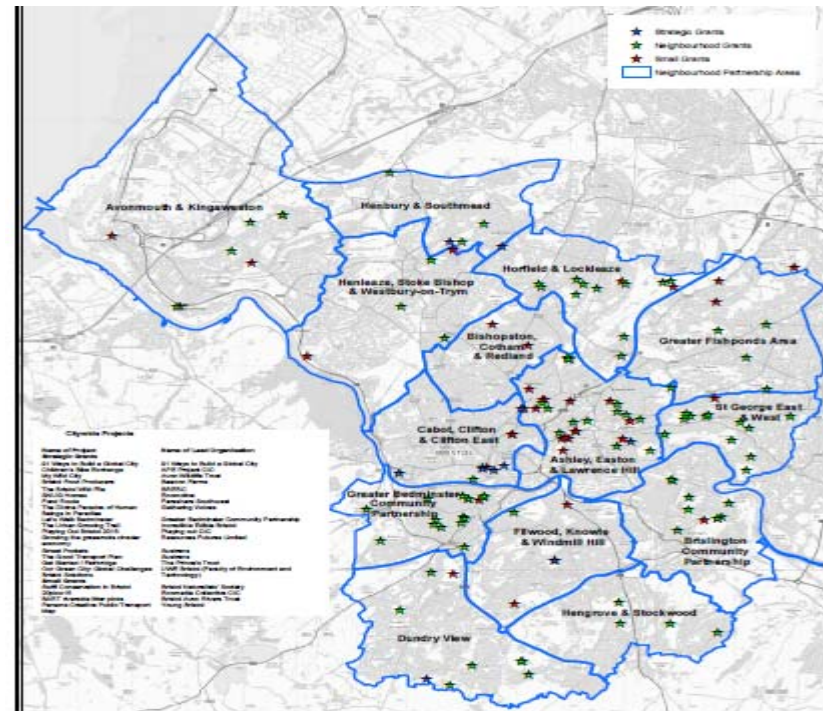
In it for good™

Community Arts Projects



Funding Community Projects

- 2.1m SEK of funding for community led projects
- 11k-55k SEK grants
- 204 Projects
- Over 250 organisations involved
- Every neighbourhood of the city
- All five themes



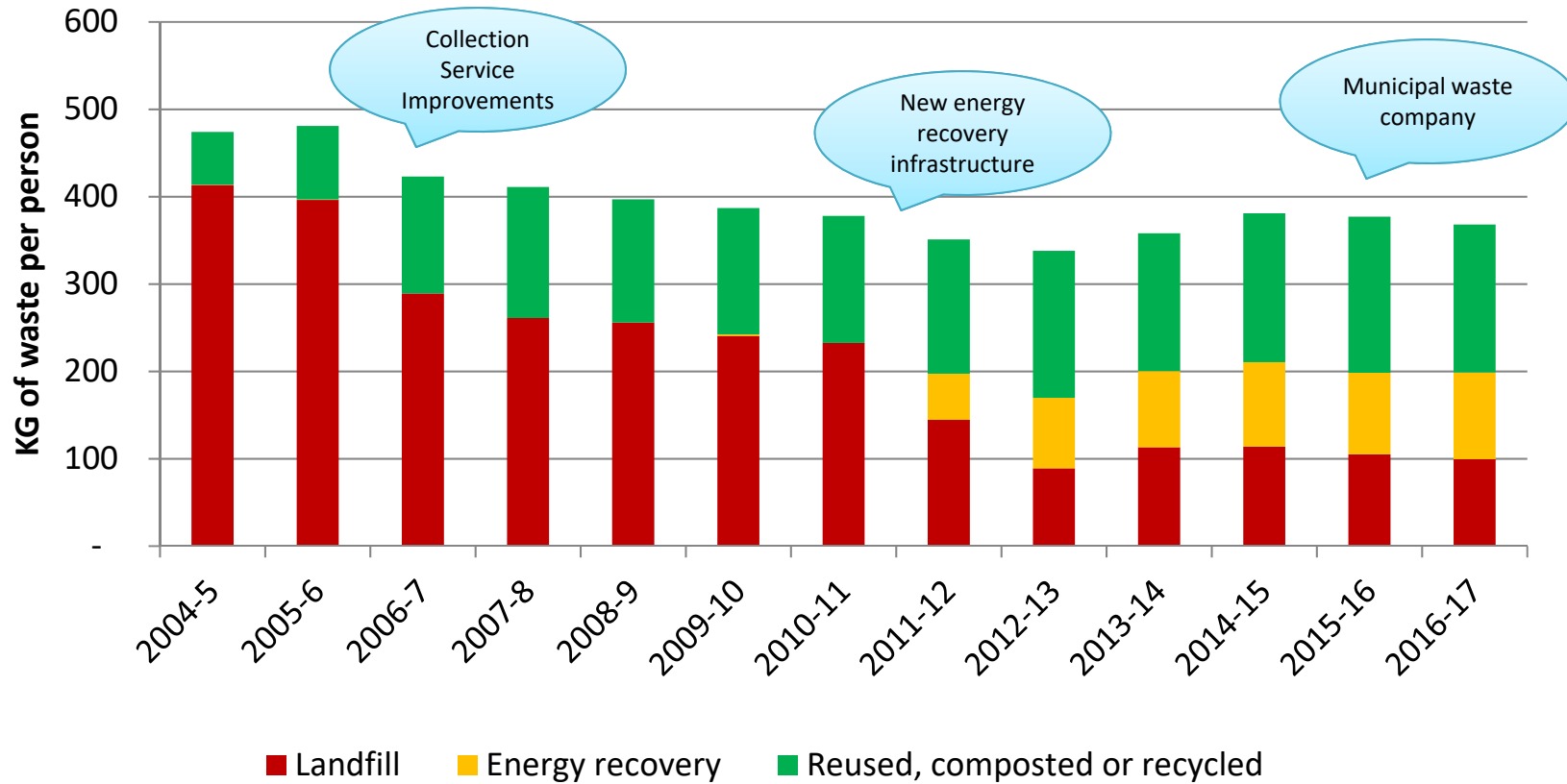
Our Resource journey

- Recycling started as a community initiative nearly 30 years ago
- Became part of municipal services with private contractors
- Sustained programme of communication to promote reuse and recycling
- Comprehensive recycling system – 18 separate waste streams collected
- Good performance for a major English city
- Significant changes in 2006 improved performance but plateaued
- Mayor is now leading citizen engagement
- Municipal Waste Company created
- Community led reuse network created



UK average 564kg
Sweden average 500kg

Household Waste





“Litter makes the whole world stinky”

Abdinasir
St Philips

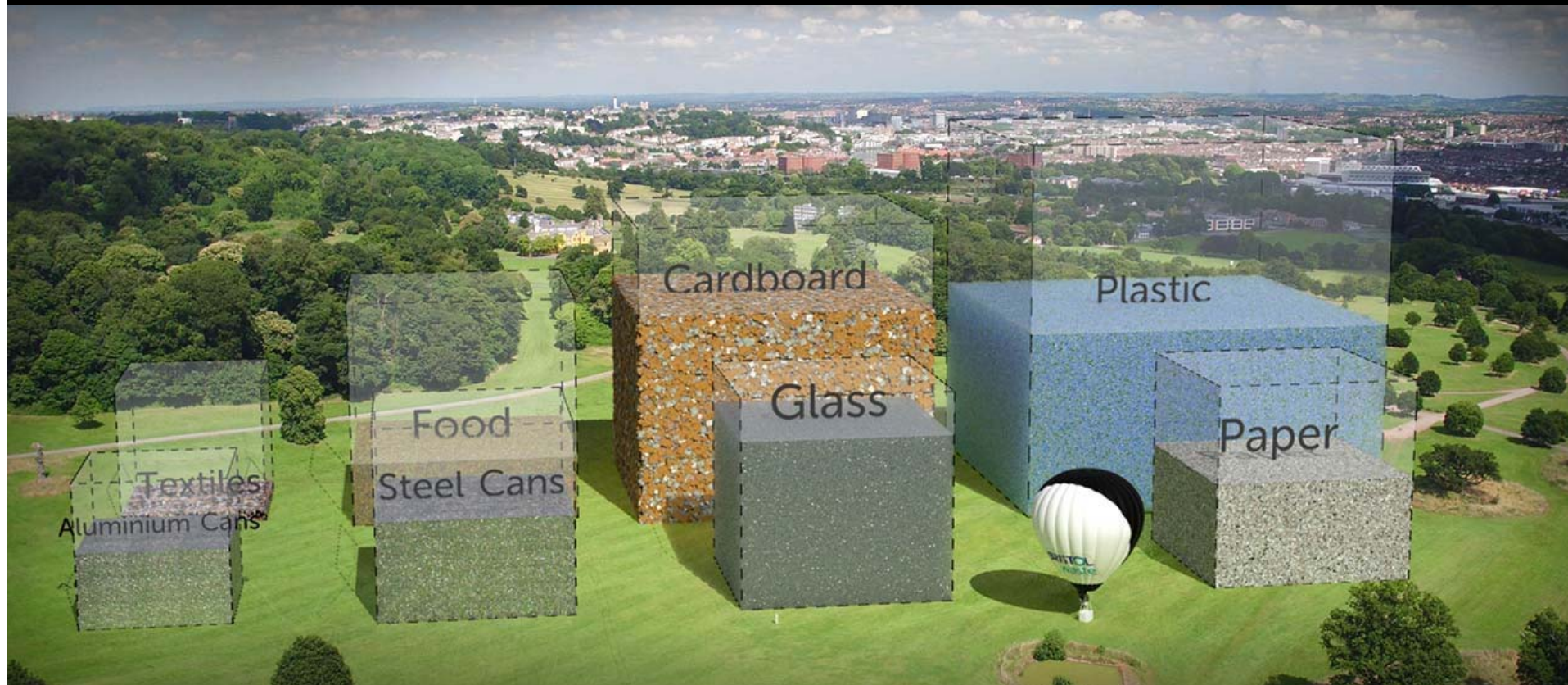


**Please use the bin or take
your litter with you**
bristol.gov.uk/superheroes

BRISTOL
Clean
Streets



helping **BRISTOL**
waste nothing





Centrespace,
Bristol
6pm till 8pm

Everyone
Welcome!

Monthly Network Meeting Last Wednesday of Every Month

Get support for
your projects and
help develop
reuse ideas in
Bristol



Sustainable Travel – some challenges

- Transport is Bristol's most commonly cited problem
- Rail network is limited
- Bus system is privatised and operated by several commercial providers
- Road space is limited and congestion delays buses
- Bristol is hilly
- Bristol's air pollution breaches EU Limit values for NO₂
- But good progress is being made...



Developing Community led Good Transport Plan



BRISTOL
2015 EUROPEAN
GREEN CAPITAL



In it for good™



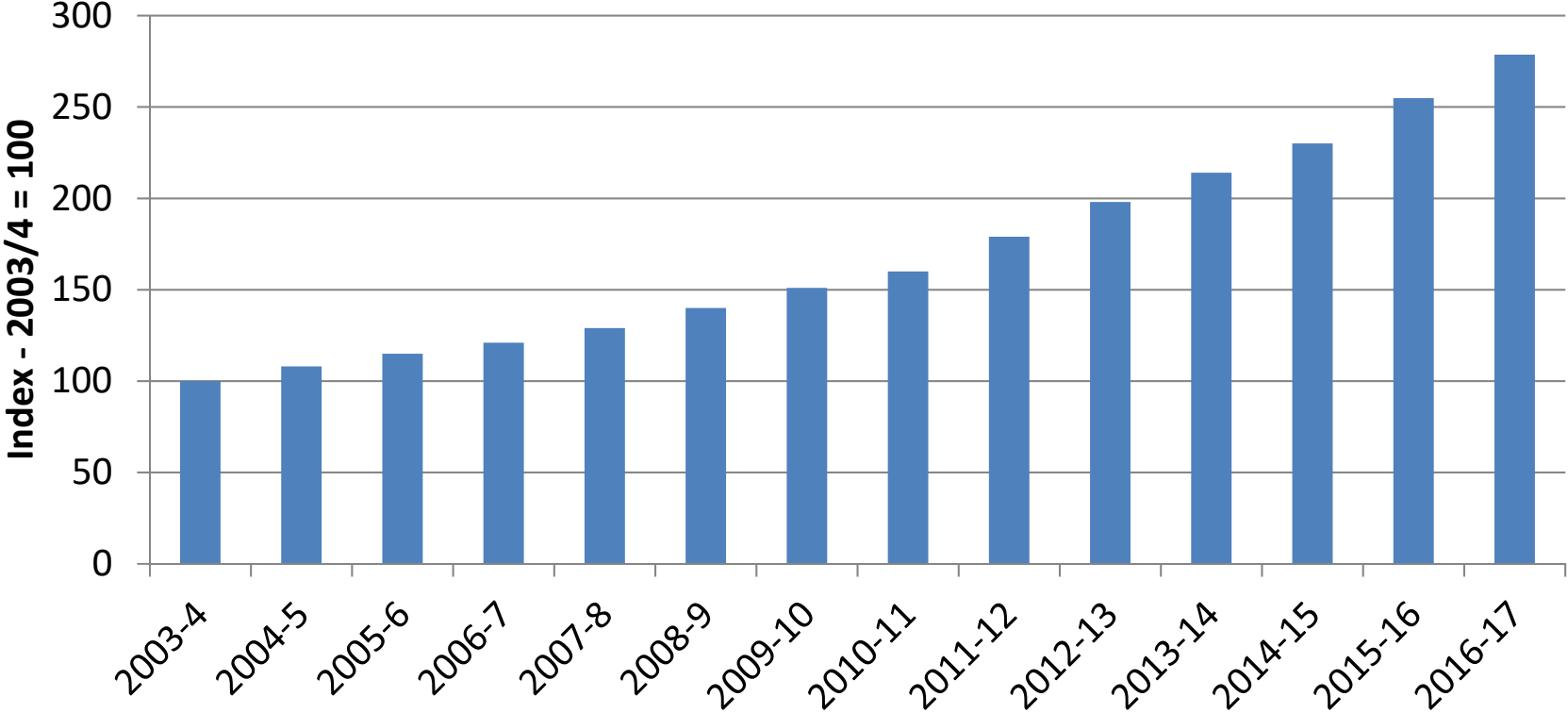
Greater Bristol
BETTER BY BIKE
Britain's First Cycling City

Set yourself free at www.betterbybike.info

BRISTOL
2015 EUROPEAN
GREEN CAPITAL

In it for good™

Becoming a Cycling City



Sustainable Food System

- Food is not a responsibility of the municipality
- Our food system is national and global
- Lots of community groups interested in food issues
- We began with research – “Who Feeds Bristol”
- Then we created a plan – The Good Food Plan
- In 2015 invested in lots of community led food projects



Processing



The food processors and manufacturers are the sector that often source and often use cheap imported meat. Most of the 'eat-out' kinds of caterers along with smaller retailers selling offcuts. Manufacturers are the largest single sector in the city region. In the meat sector they use all parts of an animal carcass. Bristol city region has good access to abattoirs including a number of smaller scale abattoirs that provide a good source of produced meat. Retaining an infrastructure of skilled food processors, bakers and butchers who can provide high quality services is important to the food system.

Wholesale and distribution



The Wholesale Fruit Centre in Bristol is a major wholesale and vegetable market serving the city, and from Penzance to Portsmouth, and from Penzance to the entire independent greenhouses of South Wales and employs some 1000 people. The scale of the operation is primarily to knock-on imported produce through networks controlled by a few large companies. These include reduced margins.

If the St Philips wholesale market were to collapse, it would cause a domino effect for thousands of businesses further afield, and for hundreds of caterers and independent businesses. The closest markets are Western International Market just outside Bristol.

Several factors could ensure the future of the wholesale market: Bristol's public sector catering establishments, especially with transport infrastructure, stronger links with caterers with the expanding network of local farmers markets.

Retail



The pattern of food retail has changed in a few decades. It used to be butchers, bakeries, corner shops, and local shops. Prices were competitive for buying small quantities. Large multiple retailers are accessed by most people.

There are some 70 supermarket outlets in Bristol but they account for the vast majority of food retail.

Source: Competition Commission October 2006. Supermarkets: A Report on the Supply of Groceries. http://www.competition-commission.org.uk/icc_reports/2006-11/super.htm (accessed Feb 2011)

Who feeds Bristol?

Towards a resilient food plan

Production • Processing • Distribution • Communities • Retail • Catering • Waste



Research report written by Joy Carey
A baseline study of the food system that serves Bristol and the Bristol city region
March 2011



collectively known as the Big FourTM. In the early 1990s the Big Four were Tesco, Morrisons, Asda, and Sainsbury's. Market stores. Tesco has shown that in every three pounds spend on food in the Bristol area has a higher proportion in the more deprived parts of the city.

Many of Bristol's local shopping centres are in the more deprived parts of the city such as the city centre.

Value Items' such as milk and butter packs, and items sold in small quantities. This has an impact on the community, who may live alone and need to be too frail to drive. The impact is significant.

There is a trend of 'cooking from scratch' fresh food. Older customers buy more ready meals.

There is a consistent and serious rise in the percentage of people who are obese. This is related to the food system through the shift in cultural patterns of eating 'foods'.

Catering businesses dealing with staple foods of these are small and medium sized businesses, or running small cafes or takeaways.

Some catering businesses are institutional caterers for the public sector. These businesses will be preparing and serving a large number of meals in hospitals, care homes, schools, and universities. 24% are serving businesses and work canteens.

Some catering companies depend on the St Philips wholesale market for their fruit and vegetable supply.

The catering sector comprises the many hundreds of restaurants, pubs and bars.

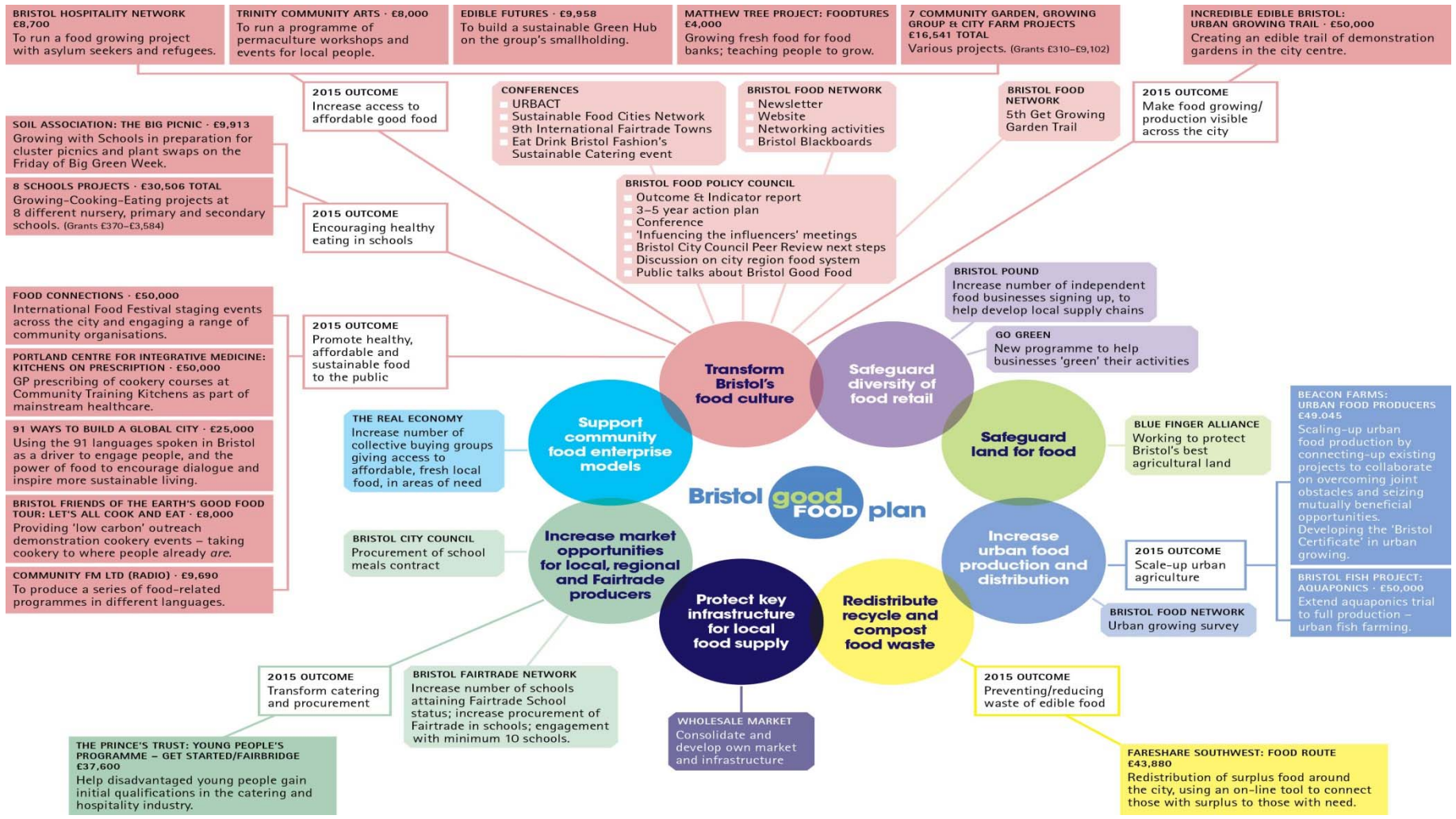
Loss of food production, distribution and retail results in food being wasted, either before being sold, or within restaurants and caterers.

At the wholesale market, significant quantities of fit-to-eat food are sent to landfill, partly because of Defra standards on food appearance.

Source: Supermarket Watch, Ethical Consumer 128 Jan/Feb 2011. <http://www.ethicalconsumer.org/ethicalconsumer/ethicalconsumer.asp> (accessed Feb 2011)

Developing Community led Good Food Plan





The next decade...



- **Collaboration** – bringing people and organisations together
- **Positivity** – promoting ambitious change and sharing best practice
- **Innovation** – encouraging and celebrating innovative solutions
- **Inclusivity** – engaging across and within communities
- **Impact** – making a real difference





BRISTOL

Find out more

www.bristol2015.co.uk/method

www.bristolgreencapital.org

Alex Minshull

City Innovation and Sustainability Service Manager

alex.minshull@bristol.gov.uk

